



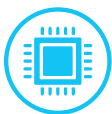
**NCER**  
MALAYSIA



# CHUPING VALLEY INDUSTRIAL AREA (CVIA)

Chuping, Perlis

**A HIGH-IMPACT STRATEGIC NATIONAL PROJECT**



**ELECTRONICS  
FOR AUTOMOTIVE**



**GREEN  
MANUFACTURING  
& TECHNOLOGY**



**HALAL  
INDUSTRIES**

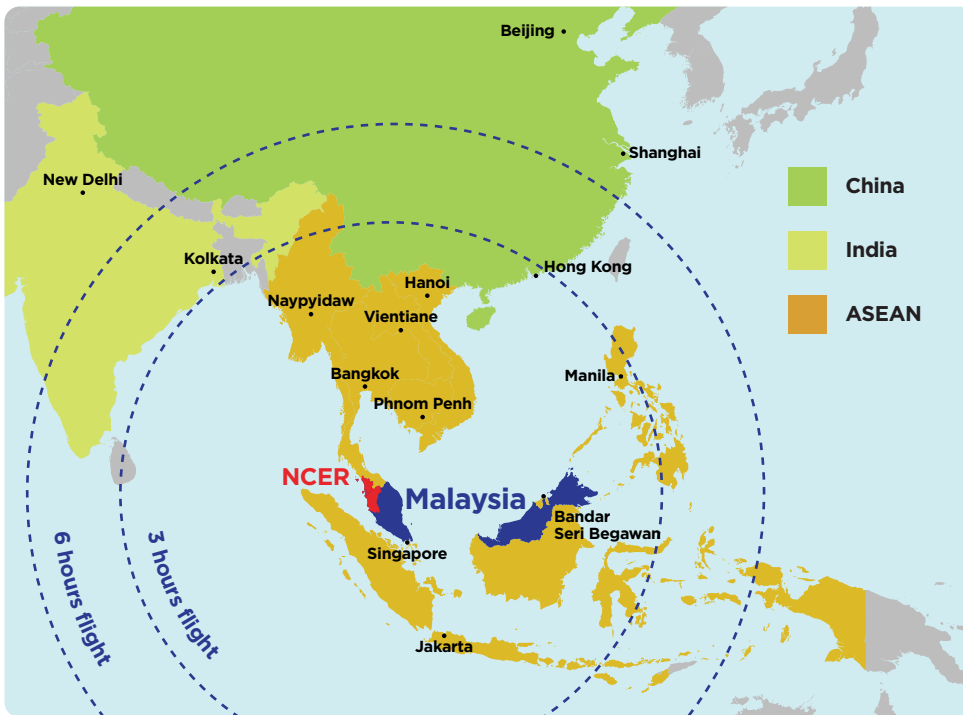


**RENEWABLE  
ENERGY**

# A World-Class Economic Region in Malaysia

The Northern Corridor Economic Region (NCER) was formed to accelerate economic growth in the four northern states of Peninsular Malaysia. Its strategic location within ASEAN makes it an attractive destination for business operations.

## NCER: The Gateway To Asia Pacific



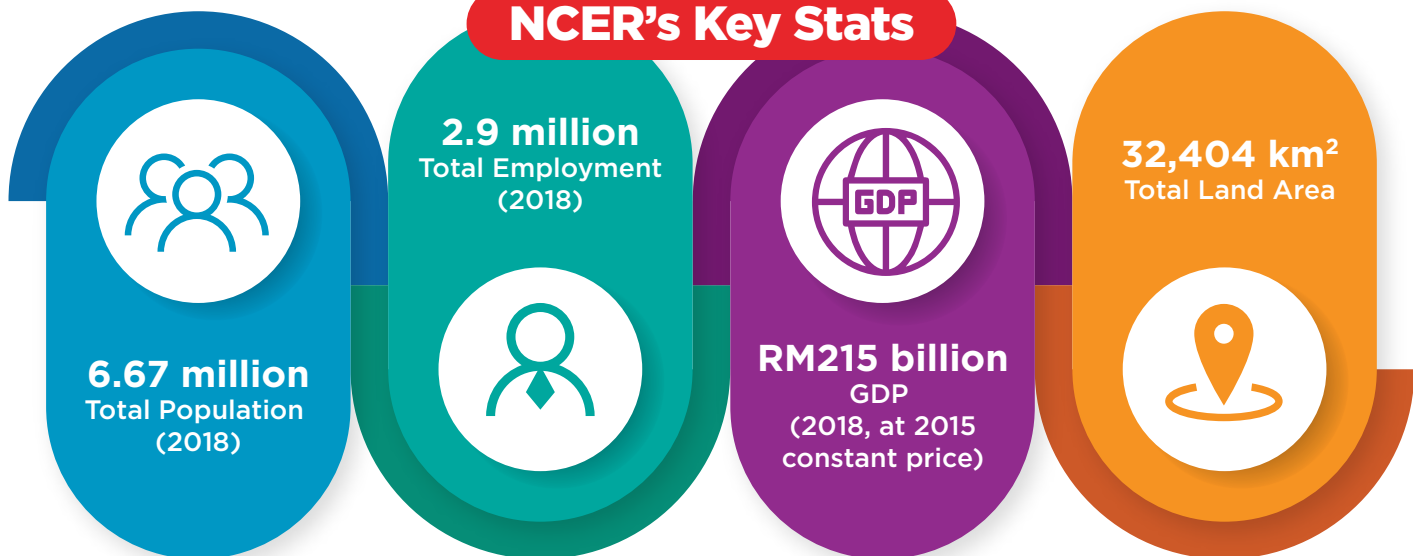
### Malaysia

- Rapidly growing green tech industry with accelerated adoption of sustainable industry practices.
- Strategically located at the crossroads of Asia, along the maritime trade route as per the Belt and Road Initiative (BRI).
- A large catchment area (ASEAN, India & China) with a population of 3.3 billion within a 6-hour flight radius providing access to one of the fastest growing markets in the world.

### NCER

- NCER Talent Enhancement Programme (NTEP) produces human capital and adequate skilled manpower to match industry requirements.
- Possesses strong innovation and R&D capabilities & uniform Industry 4.0 readiness for increased efficiency and productive output.

## NCER's Key Stats



## CVIA: The Catalyst For Malaysia's Green Tech Industries

The Chuping Valley Industrial Area (CVIA) in Lembah Chuping, Perlis, is a 2,482-acre development centred around green and halal industries that is set to transform Perlis into a high-income and industrialised state by 2030.



### CVIA Integrated Business Centre (IBC)

CVIA-IBC is an administrative, operations and marketing center to facilitate investors in CVIA who can utilise CVIA-IBC as a launch pad for manufacturing activities.


## Why CVIA?



Strategically located bordering Thailand & facing Straits of Malacca, for limitless potential and economic & social growth.




Border towns - Pengkalan Hulu-Betong (Yala Province), Padang Besar, Bukit Kayu Hitam-Sadao & Durian Burung-Ban Prakop (Songkhla).



Leverage on spill over effect of Penang's boom in E&E Manufacturing sector (exceeding RM80 billion) & connectivity with Penang Port.



Within the Indonesia-Malaysia-Thailand Growth Triangle (IMT-GT).



Upcoming Perlis Inland Port (PIP) as a Logistics Hub, Warehousing & Light Industrial Area with expected handling capacity of 400k TEUs to capture South Thai cargoes.

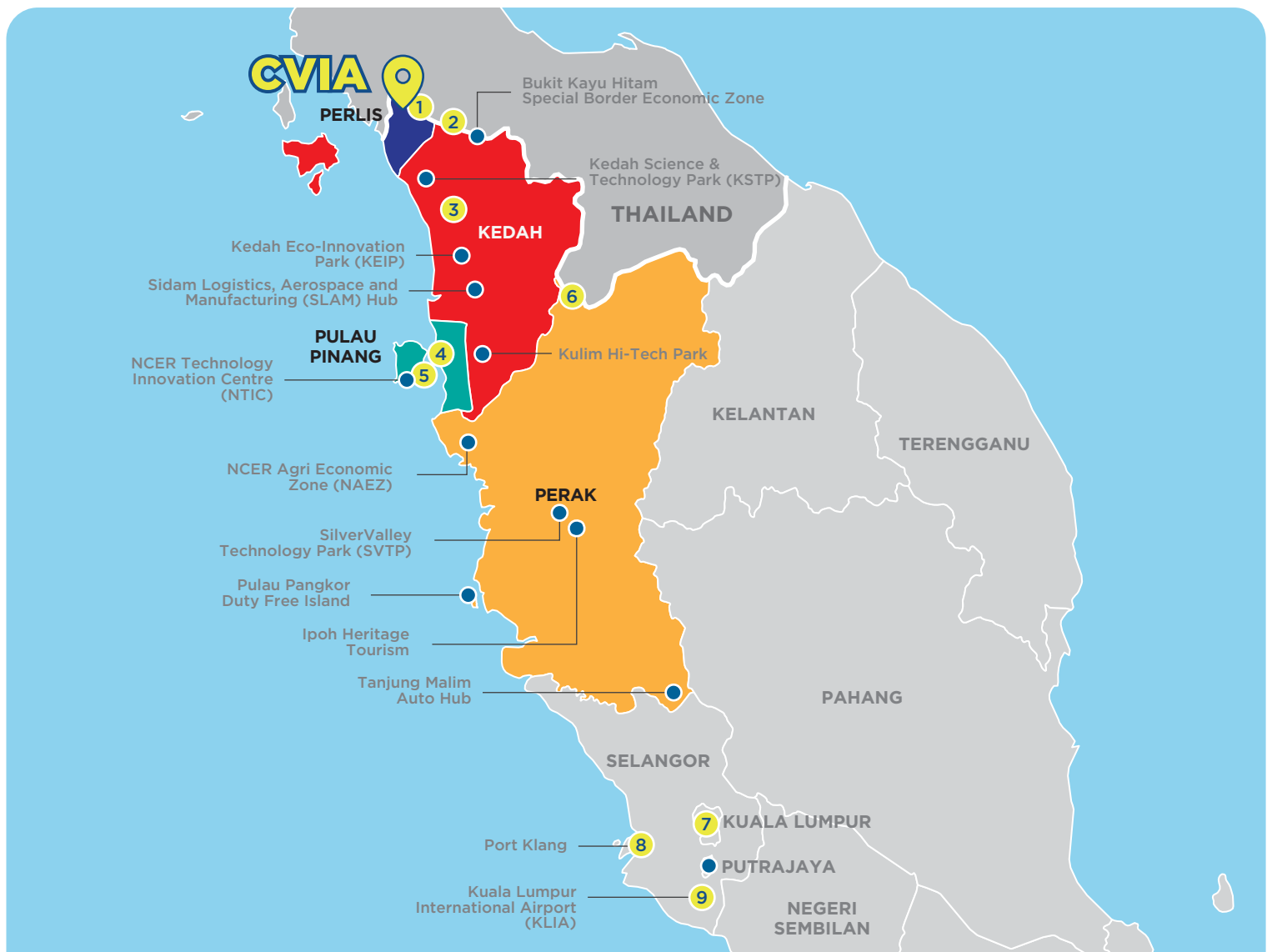
  Northern Corridor Economic Region

  ncermalaysia

 NCER Malaysia

**Address:**  
No. 1114, Jalan Perindustrian Bukit Minyak 18,  
Penang Science Park, 14100 Simpang Ampat,  
Pulau Pinang, Malaysia

# Where is CVIA?



- 1** **9.5 km**  
from Padang Besar  
Cargo Terminal
- 2** **27 km**  
from Sadao  
Customs House
- 3** **71 km**  
from Sultan Abdul  
Halim Airport
- 4** **170 km**  
from  
Penang Port
- 5** **192 km**  
from Penang  
International Airport
- 6** **196 km**  
from Betong  
Customs House
- 7** **491 km**  
from  
Kuala Lumpur
- 8** **514 km**  
from  
Port Klang
- 9** **533 km**  
from Kuala Lumpur  
International Airport

## Northern Corridor Implementation Authority (NCIA)

The Northern Corridor Implementation Authority (NCIA) is the statutory body responsible for providing direction, devising policies and strategies that promote and accelerate the development of NCER. Established in 2008 under Act 687, NCIA catalyses and implements high value-added development projects and programmes, and also promotes private sector participation in the region.



For more information, find us at