



NCER
MALAYSIA



KEDAH RUBBER CITY (KRC)

Padang Terap, Kedah

A HIGH-IMPACT STRATEGIC NATIONAL PROJECT



**CATALYTIC
ANCHOR
TENANTS**



**SPECIALISED
LATEX & RUBBER
PRODUCTS**

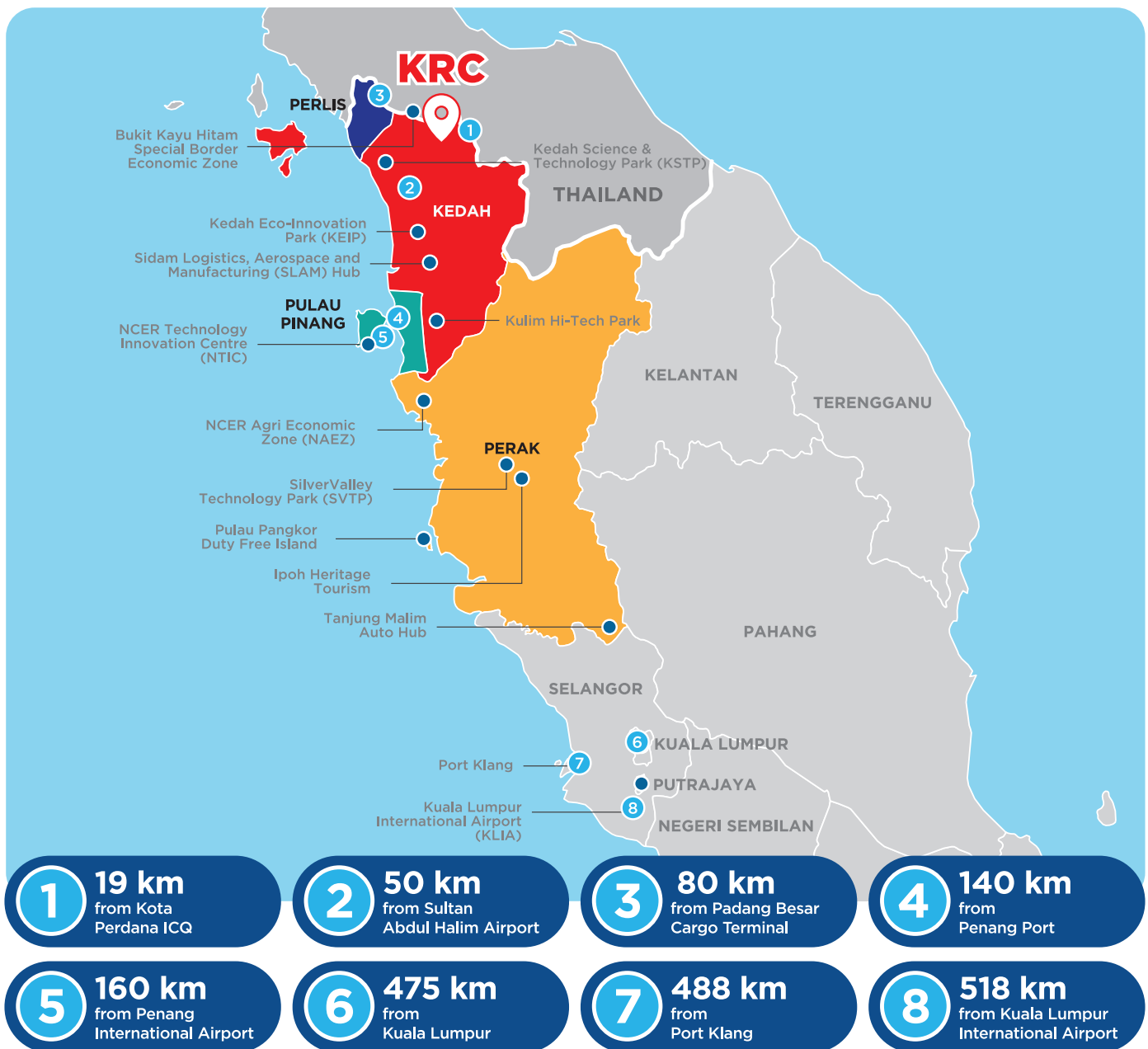


**GREEN
RUBBER
PRODUCTS**



**PRECISION
ENGINEERED
RUBBER PRODUCTS**

Where is KRC?



Northern Corridor Implementation Authority (NCIA)

The Northern Corridor Implementation Authority (NCIA) is the statutory body responsible for providing direction, devising policies and strategies that promote and accelerate the development of NCER. Established in 2008 under Act 687, NCIA catalyses and implements high value-added development projects and programmes, and also promotes private sector participation in the region.

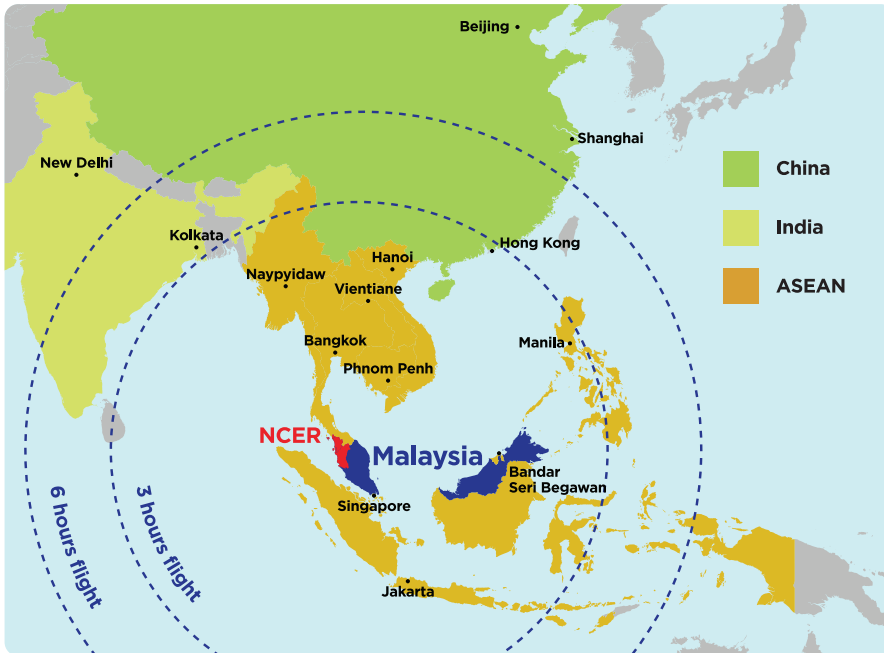


For more information, find us at

A World-Class Economic Region in Malaysia

The Northern Corridor Economic Region (NCER) was formed to accelerate economic growth in the four northern states of Peninsular Malaysia. Its strategic location within ASEAN makes it an attractive destination for business operations.

NCER: The Gateway To Asia Pacific



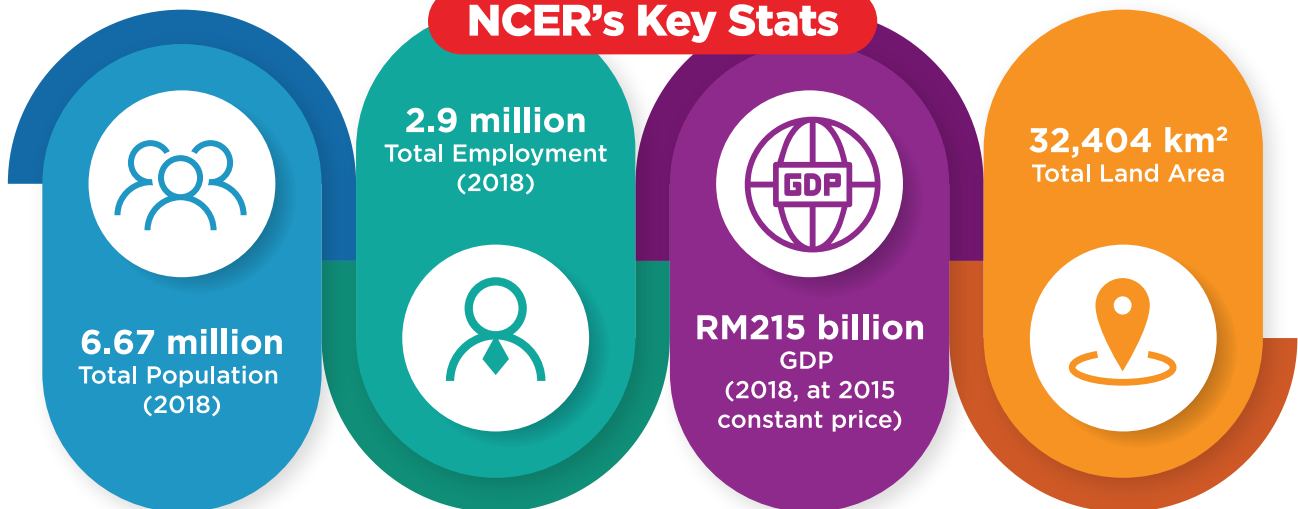
Malaysia

- Global leader in rubber industry technology & niche rubber product sectors.
- Strategically located at the crossroads of Asia, along the maritime trade route as per the Belt and Road Initiative (BRI).
- A large catchment area (ASEAN, India & China) with a population of 3.3 billion within a 6-hour flight radius providing access to one of the fastest growing markets in the world.

NCER

- NCER Talent Enhancement Programme (NTEP) produces human capital and adequate skilled manpower to match industry requirements.
- Possesses strong innovation and R&D capabilities & uniform Industry 4.0 readiness for increased efficiency and productive output.

NCER's Key Stats



KRC: Malaysia's First Dedicated Rubber Eco Industrial Park

Kedah Rubber City (KRC) is a synergistic effort supported by Malaysia and Thailand to stimulate socioeconomic development in the border region and accelerate the development of Malaysia's rubber industry, developing into a "Rubber Corridor" that will link the region's major rubber producers in the Indonesia-Malaysia-Thailand Growth Triangle (IMT-GT).



Why KRC?

A new industrial growth node for the rubber industry in IMT-GT & ASEAN.

Technical collaboration with the Malaysian Rubber Board (MRB).

A conducive ecosystem for sustainable rubber-based industry development through the provision of high technology, innovation and high knowledge content with emphasis on high value-added products.

Focus Sectors

 **Automotive Rubber Products**

 **Advanced Latex Products**

 **Tyre & Tyre-Related Products**

• Glove • Latex Foam • Condom

• Passenger & Commercial Vehicles

 **Biotechnology**

• Food Additive • Animal Feed
• Fertiliser

 **Engineering Rubber Products**

• High Damping Rubber Bearing
• Marine Fender

 **Advanced Rubber & Rubber Materials**

• Ekoprena • Pureprena

 **Service & Support**

• High Precision Compounding
• Mould Design & Fabrication
• Testing & Certification

  Northern Corridor Economic Region

  ncermalaysia

 NCER Malaysia

Address:

No. 1114, Jalan Perindustrian Bukit Minyak 18,
Penang Science Park, 14100 Simpang Ampat,
Pulau Pinang, Malaysia